

# Mono Series Bonneted Knife Gate Valves



**PMP**

**PMP PRECISION VALVE CO. LTD.**



## MONO Series Knife Gate Valves

The Mono knife gate valve, designed by Weco Armaturen Germany\*, has a unique one piece bonneted body to reduce operating torque and eliminate potential leakage to atmosphere.

Manufactured by Jash Engineering the Mono series knife gate valve meets TAPPI - MSS- SP81, TIS-405-8 standards and compliant with new AWWA-C 520-10 requirements.

The Mono series offers outstanding features as compared to conventional knife gate valves, at competitive pricing to standard bolted bonnet designs.

Available in ANSI B16.5 class 150 lb. full lugged or semi lugged, body designs.

Materials include ASTM stainless & alloy steels or ductile iron, NSF-61 epoxy coated.

\* Patent in USA, Canada, Europe, Asia  
by Weco Armaturen, MBH, 12/39960



# MONO Series Knife Gate Valves

## Features and Benefits

**One piece** investment cast body eliminates potential leak paths, valves can be installed in any position.

Bonnet style body **eliminates leakage** through the stem area at full design pressures and limits exposing the gate to atmosphere, **odors are contained**.

Unique “O” ring stem seal assembly, eliminates the need for a stuffing box, **reduces operating torque** and maintenance requirements with higher cycle life.

Precision water jet cut beveled gate edge, easily cuts through debris or build up.

**Full port** design offers high flow rates for reduced pumping costs.

Variety of seat materials offers flexibility for specific applications: **Metal, Buna-N, EPDM, Viton, PTFE, PEEK**

Retained seat will not pull out under full design pressure.

Corrosion resistant stainless steel stem with large pitch thread offers reduced ease of operation.

**Rising and non-rising stems** are available

**Purge ports** offer flexibility to purge body chest cavity, or to monitor pressure.

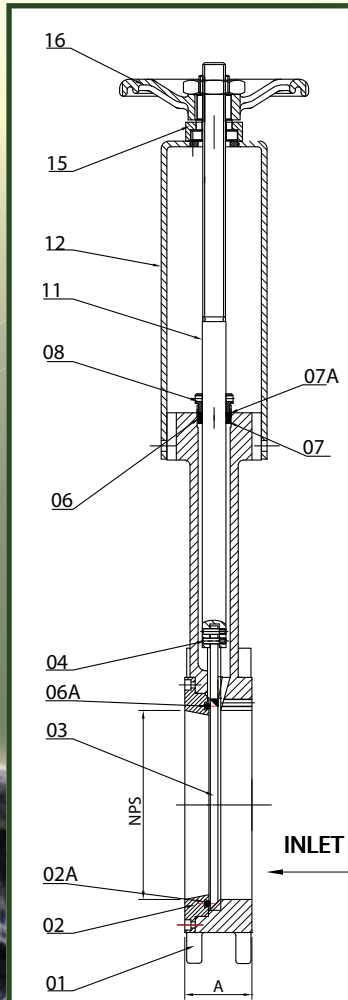
**V-Port inserts** are available for control applications with either electric or pneumatic actuation.

**Optional** accessories: AWWA manual bevel gear operators, shaft extensions, floor stands, wall brackets, deflector cones for slurry and abrasive applications, actuation for on-off or modulating services, solenoid valves, limit switches, speed controls, actuators and chain wheel operators.





## MONO Series Knife Gate Valves



No.	DESCRIPTION	MATERIAL
16	HAND WHEEL	DUCTILE IRON
15	ADAPTER PLATE	CARBON STEEL GALVANIZED
14	SPACER	BRASS
13	SPACER	SS : 410
12	SUPPORTING BRACKET	CARBON STEEL PAINTED
11	STEM (RISING)	ASTM A 276 Gr. : 316 / 317
10	STEM (NON-RISING)	ASTM A 276 Gr. : 316 / 317
09	SEALING NUT	H.T. BRASS
08	STEM NUT	H.T. BRASS
07A	UPPER SCRAPER RING	BRASS
07	LOWER SCRAPPING RING	BRASS
06A	RETAINER RING "O" RING	VITON
06	"O" RING FOR STUFFING BOX	NBR / EPDM / VITON
05	CONNECTING PIPE	ASTM A 240 Gr. : 304
04	SLOTTED HEAD GRUB SCREW	AISI 316 / 317
03	KNIFE GATE	ASTM A 240 Gr. : 316 / 317
02A	SEAT	EPDM, BUNA, VITON
02	RETAINER RING	ASTMA A 351 Gr. CF :8M / CG BM
01	HOUSING / BODY	ASTMA A 351 Gr. CF :8M / CG BM
<i>ASSEMBLY FASTNERS - AISI 316 / 317</i>		



## MONO Series Knife Gate Valves



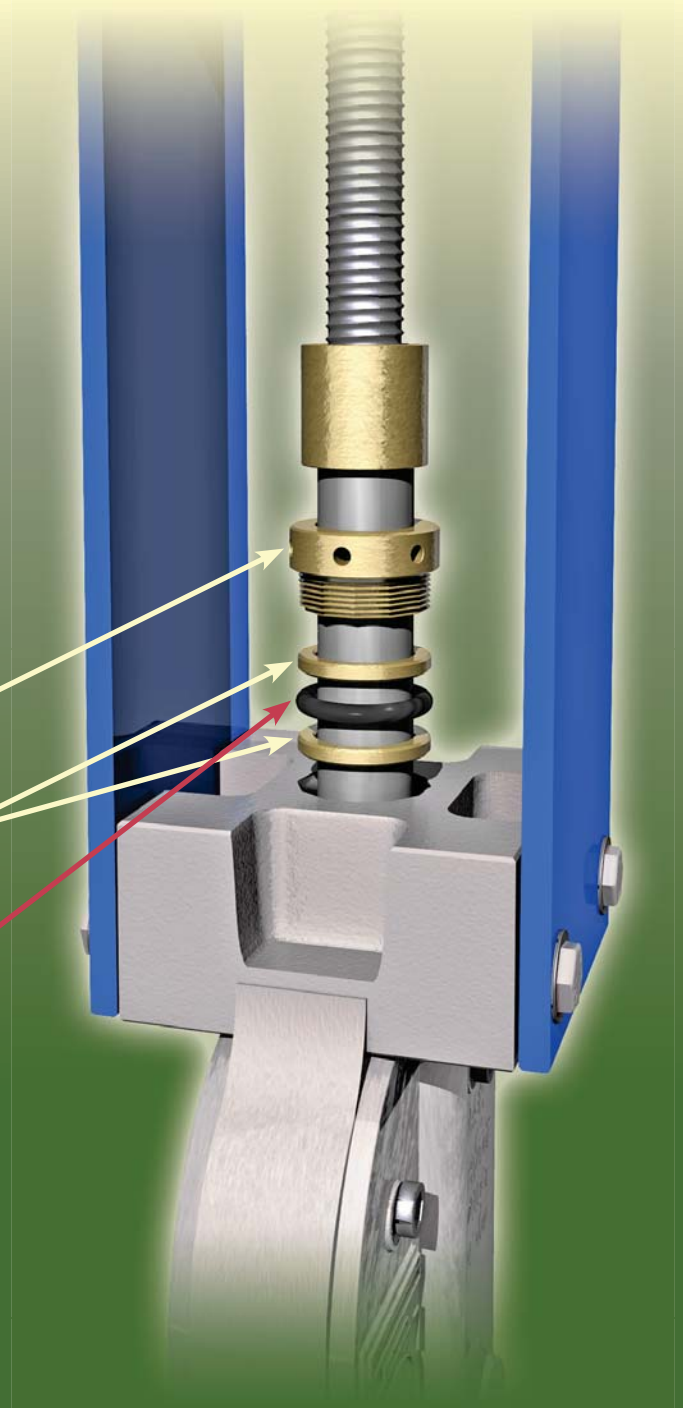
Meets  
TA-LUFT  
Emission  
Standards

Unique stem seal assembly uses a  
thrust nut retainer (#08)

with two scraper ring thrust washers  
(#07&07A)

compressing a standard "O" ring (#06)  
meets NSF61 standards

eliminating historical leaking of the  
packing gland.

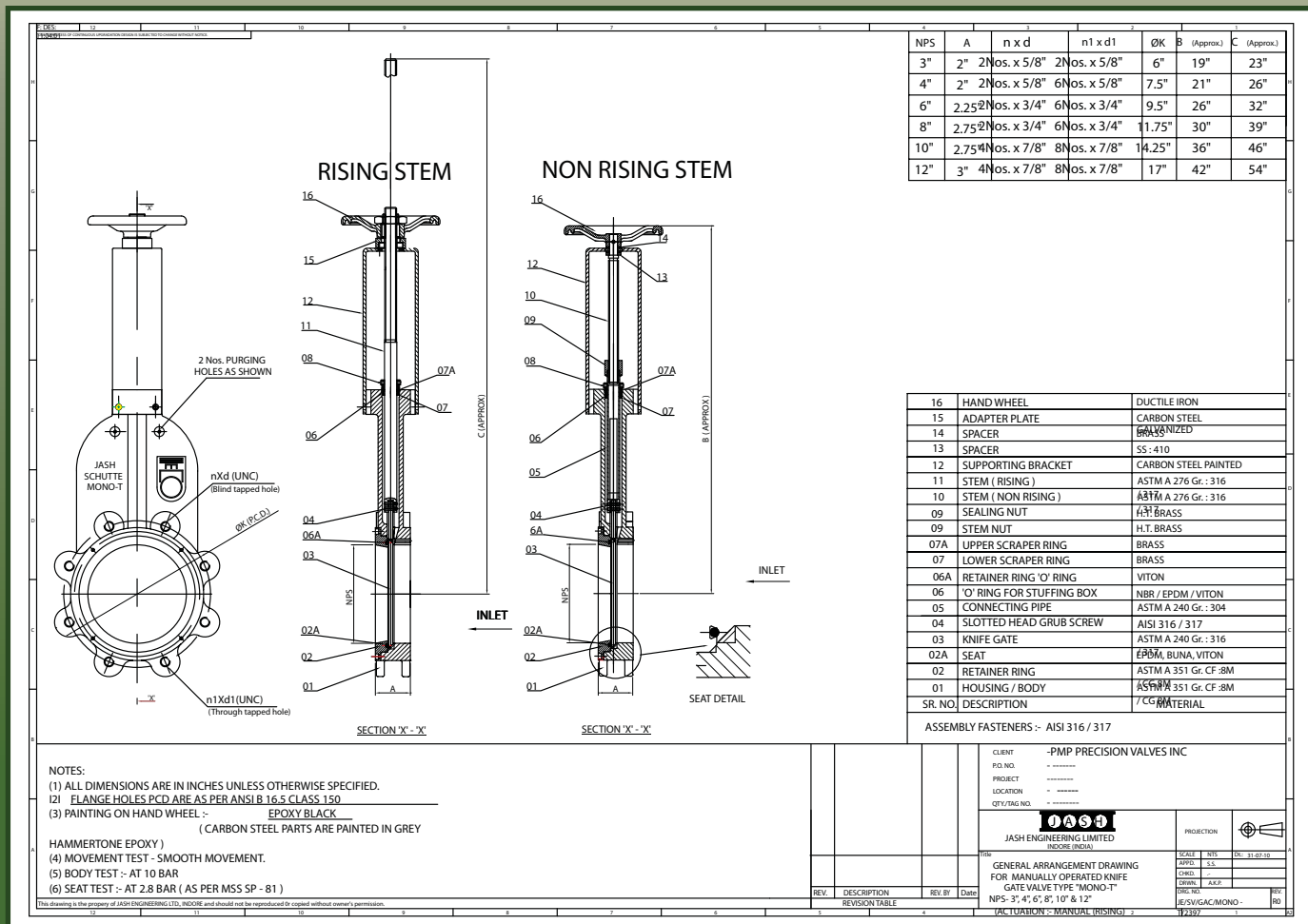




# MONO Series Knife Gate Valves

## Design Standards

DESIGN	: MSS SP-81:2006 , AWWA C520-10
STANDARD	: TAPPI TIS 405-8 . EN 982 : 1995
PRESSURE TEST	: MSS SP - 81, MSS SP - 61, ANSI B16.34
EMISSION STANDARD	: TA-LUFT VDI 2440
MARKINGS	: MSS SP-25
FLANGE DRILLING	: ANSI B16.5 Class 150 RF
FLANGE FACING	: ANSI B16.5





# MONO Series Knife Gate Valves

## Design & Maximum Working Pressures

Design Pressure: psig, CWP	VALVE SIZE		
	2" - 12"	14" - 18"	20" - 24"
Body & Bonnet / Shell	225	175	135
Packing	225	175	135
Seat (preferred direction)	150	120	90

Working Pressure: psig, CWP	VALVE SIZE		
	2" - 12"	14" - 18"	20" - 24"
Body & Bonnet / Shell	150	135	90
Packing	150	135	90
Seat (preferred direction)	150	80	60

Maximum admissible working pressure on seat in non preferred direction:  
In this case the pressure in the line is pushing the gate away from seat.

VALVE SIZE	ADMISSIBLE WORKING PRESSURE PSI / BAR
2" - 4" / 50-100 mm	150 / 10
5" - 6" / 125-150 mm	120 / 8
8" / 200 mm	90 / 6
10" / 250 mm	60 / 4
12" / 300 mm	45 / 3
14" - 18" / 350-450 mm	30 / 2
20" - 24" / 500 - 600 mm	22.5 / 1.5

*Note: Pressures stated above are cold working pressure (CWP)*

*\* For bi-directional full working pressure at 150 psi, see model MONO-BD*



## MONO Series Knife Gate Valves



***Mono BD***

***Bi-directional  
shut-off at full  
differential pressure.***

**PMP Precision Valve Co. Ltd.**

3464 Poirier boulevard  
Saint Laurent, Qc, H4R 2J5

Email: [info@pmpvalve.com](mailto:info@pmpvalve.com)  
Tel: 514 331 0729  
Fax: 514 331 9849



**PMP Precision Valve Inc.**

250 Cooper Ave. Suite 102  
Tonawanda, New York, NY 14150

Email: [info@pmpvalve.com](mailto:info@pmpvalve.com)  
Tel: 518 238 2583  
Fax: 514 331 9849