



Flanged Y-Strainer

2049F
ANSI 150/300
1/2" - 12"

- 1/2"~2" Investment cast body
 - 2-1/2" and larger sand casting
- Designed to: ANSI B16.34

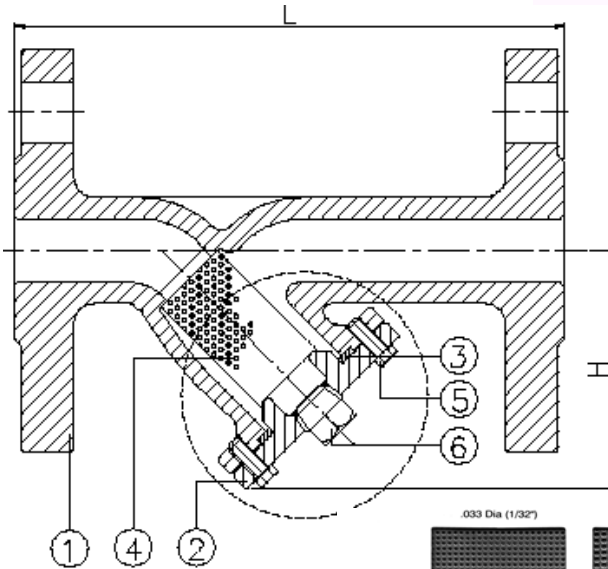


Flanged ends to:
ANSI B16.5
class 150 & 300

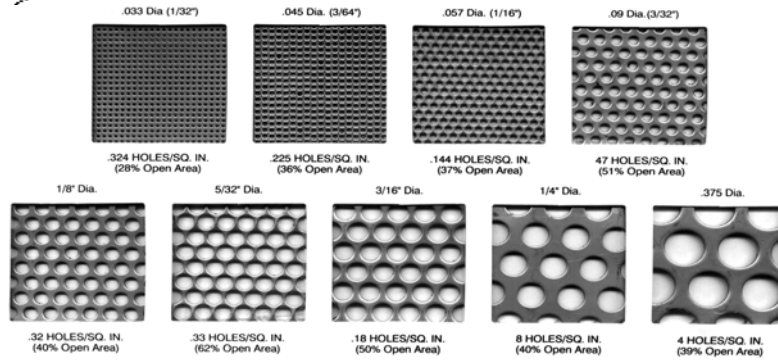
- CF8M & WCB steel bodies
- 316 SS screens 1/4" mesh
- Max. working temperature 445 F

Options:

- Blow down valve
- Various size screens and mesh liners



ITEM	PARTS	MATERIAL
1	BODY	ASTM A351-CF8M
		ASTM A216-WCB
2	COVER	ASTM A351-CF8M
		ASTM A216-WCB
3	GASKET	PTFE
4	SCREEN	AISI 316
5	BOLT	AISI 304
6	PLUG	ASTM A351-CF8M
		ASTM A216-WCB



PERFORATIONS OTHER THAN THOSE SHOWN AVAILABLE - ALL OPEN AREAS APPROX.

SIZE		1/2"	3/4"	1"	1-1/4"	1-1/2"	2"	2-1/2"	3"	4"	5"	6"	8"	10"	12"	
Class 150	L	in	4.92	5.51	6.30	7.09	7.48	8.66	10.63	11.42	13.78	15.35	17.32	21.26	25.20	31.89
		mm	125	140	160	180	190	220	270	290	350	390	440	540	640	810
	H	in	2.48	2.68	3.03	4.49	4.53	5.04	7.40	7.87	9.45	9.84	11.81	16.14	18.70	23.62
		mm	63	68	77	114	115	128	188	200	240	250	300	410	475	600
Class 300	L	in			7.28		7.48	9.06	10.63	12.60	14.57	18.50	19.69	25.00	29.13	33.86
		mm			185		190	230	270	320	370	470	500	635	740	860
	H	in			3.15		4.72	5.71	7.28	8.66	9.84	12.20	13.78	16.93	19.69	23.62
		mm			80		120	145	185	220	250	310	350	430	500	600

PMP Precision Valve Company Ltd. Is a progressive supplier of current products. The features, materials of construction and dimensional data as detailed in this bulletin are intended for your reference only, and should not be relied upon unless confirmed in writing by PMP Precision Valve Co. Ltd.. Certified dimensional drawings are available upon order receipt.